

**BSB**

The British School  
of Barcelona

# EARLY YEARS

2 to 4 years old



ENJOY. LEARN  
**BECOME**

## Choosing BSB

At BSB, we understand how important it is to choose the right Early Years school for your child.

We are committed to making that choice feel effortless by offering a beautiful, welcoming place where children flourish.

When you choose BSB, you're joining an international community dedicated to nurturing curiosity, building confidence, and fostering character in every child.

Our mission in Early Years is to provide an engaging and nurturing environment where children can feel safe, happy, and inspired as they begin their educational journey. They are encouraged to explore the world in their own unique way, igniting a passion for discovery that helps them build essential skills and fosters a lifelong love of learning. Through active play, exploration and quality teaching, our students establish a foundation for strong academic progress.





# How We Bring Our Mission to Life

## A Beautiful Environment

Our purpose-built Early Years spaces have been thoughtfully designed to inspire wonder and creativity.

**Bright and welcoming classrooms:** each classroom is a vibrant, engaging space that stimulates children's learning and creativity.

**Large outdoor play spaces:** our spacious outdoor classrooms encourage active play and exploration, fostering physical development.

**Stimulating resources:** a wide array of resources and natural materials stimulates inquiry and imagination.



## Expert Staff Who Inspire and Nurture

Our team of highly qualified educators is passionate about helping young learners thrive.

**Dedicated practitioners:** with warmth and care, our staff creates a supportive environment where children feel valued.

**Inspiring awe and wonder:** each day, our staff creates a buzz of learning that inspires curiosity and wonder.

**Learning through play:** through child- and teacher-led play, children build essential skills naturally and enjoyably.







'I love the Early Years! The children have a wonderful curriculum, they are free to choose how to access their learning and spend the day playing. The staff are incredibly caring, dedicated and professional. It is a warm environment and I feel my child is really considered as an individual.'

*Parent survey 2024*





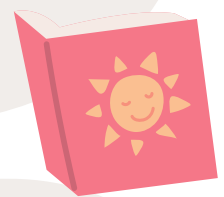
# The Seven Areas of Learning

In our Early Years programme, children learn mainly through games and play in seven key areas of learning and development, ensuring a well-rounded early education.

## Communication and Language

We develop children's language skills through rich, meaningful conversations with adults and peers.

Regular storytelling, role play, and reading activities expand vocabulary and encourage confident expression, setting a strong foundation for language and cognitive development.



## Personal, Social, and Emotional Development

Strong, warm and supportive relationships with caring adults help children understand and manage emotions, build confidence, and develop social skills. Through adult modelling and guidance, they learn self-care, make friends, and resolve conflicts, creating a secure base for lifelong learning.

## Physical Development

We promote physical activity, as it is essential to support a child's overall development, fostering happy, healthy, and active lives. Through gross motor activities we build strength and coordination, while fine motor tasks enhance hand-eye coordination, all of which support overall wellbeing and readiness for later academic tasks.

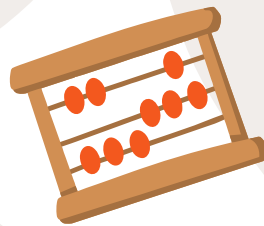


## Literacy

Through early exposure to daily phonics lessons, children are taught to recognise letters and sounds. This supports progress in word reading and writing. Engaging with stories, rhymes, and conversations fosters both a love of reading whilst supporting children's developing comprehension skills.

## Mathematics

Children develop an understanding of maths through stories, songs, games and imaginative play. Hands-on activities build confidence in counting, problem-solving, and recognising patterns, which supports a positive attitude toward mathematics.



## Understanding the World

Through real-world experiences and interactions, children expand their knowledge of their environment and community. Educational visits, stories, and cultural activities enrich and widen their vocabulary and increases their knowledge and sense of the world around them.

## Expressive Arts and Design

Through art, music, and performance, we nurture children's confidence and creativity. Engaging in these activities allows them to express themselves, develop their vocabulary and their ability to communicate through the arts.







'We are extremely pleased with BSB and the level of education provided. Our son enjoys school and always has a smile on his face at pick up. The learning is way beyond expectations and so the kindness of his teacher.'

*Parent survey 2024*



# How we follow the natural rhythm of each child



Start the day with a smile



Guided sessions with specialist staff



Limitless exploration and independent inquiry: making real world connections



Shared mealtimes: a community experience





Learning outdoors



Learning through playful curiosity



Storytime and imaginative play



Collaborative experiences and fostering relationships

# BSB | The British School of Barcelona

## BSB City

Campus Esperança: Carrer de l'Esperança, 32, 08017 Barcelona (Spain)

(+34) 93 707 95 98 | [enquiriesbcn@bsb.edu.es](mailto:enquiriesbcn@bsb.edu.es)

## BSB Castelldefels

Carrer Ginesta, 26, 08060 Castelldefels (Barcelona, Spain)

(+34) 93 707 95 98 | [enquiries@bsb.edu.es](mailto:enquiries@bsb.edu.es)

## BSB Sitges

Passeig Isaac Albéniz, s/n, 08870 Sitges (Barcelona, Spain)

(+34) 93 707 95 98 | [enquiries@bsb.edu.es](mailto:enquiries@bsb.edu.es)

Learn more



[www.britishschoolbarcelona.com](http://www.britishschoolbarcelona.com)

A COGNITA SCHOOL